

N17

ATLANTIC
ECONOMIC
CORRIDOR

KNOCK TO COLLOONEY

EMERGING PREFERRED TRANSPORT CORRIDOR
AND SCHEME DEVELOPMENT STRATEGY

PUBLIC DISPLAY EVENT

31st JANUARY TO 21st MARCH 2023



N17knockcollooney.ie



Tionscaldal Éireann
Project Ireland
2040



An Roinn Iompair
Department of Transport



Sligo



PROJECT BACKGROUND

The N17 national primary road is a vital regional link, providing connectivity between Galway City and Sligo Regional Centre, and servicing Ireland West Airport Knock. It is a key transport component of the Atlantic Economic Corridor, a government initiative to encourage investment in the west of Ireland.

On a national scale the N17 forms part of the transport network connecting the cities along the western seaboard, Cork-Limerick-Galway-Derry. The N17 Knock to Collooney project is listed in the National Development Plan (2021-2030).

PROJECT DESCRIPTION

Sligo and Mayo County Councils are working in partnership with Transport Infrastructure Ireland (TII) to develop a transport scheme to improve regional accessibility to the northwest of Ireland and to provide a safe and efficient transport network between Knock and Collooney. The project will provide bypasses of Ballinacarrow, Achonry, Tobercurry, Charlestown and Bellaghy, removing heavy goods vehicles and strategic

traffic from the urban areas, creating an environment where Active Travel is prioritised. The project has been developed in phases with opportunities for the public to participate in the decision-making process.

The project is approaching the end of the Option Selection phase. A public display event is being held to inform the public of the Emerging Preferred Transport Corridor (preferred corridor).

A public display event is being held to inform the public of the Emerging Preferred Transport Corridor



WHAT'S HAPPENING NOW?

The Project Team has completed an appraisal of the short-list of options to determine the preferred corridor. The preferred corridor has been assessed as providing the most sustainable solution and optimum balance of benefits and impacts in relation to the six criteria used when considering transport infrastructure projects:



PHYSICAL ACTIVITY



ACCESSIBILITY AND SOCIAL INCLUSION



SAFETY



INTEGRATION



ENVIRONMENT



ECONOMY

The purpose of the public display is to inform the public of the preferred corridor and to afford the public opportunity to engage in the process should they have queries, concerns and comments relating to the preferred corridor.



THE EMERGING PREFERRED TRANSPORT CORRIDOR

The Emerging Preferred Transport Corridor is typically 500m wide. It does not represent the actual width of the scheme or the lands to be acquired. The preferred corridor indicates the lands within which the project could be developed. Exact details of the land take, earthworks, junction design, side road design, property impacts, active travel measures and public transport measures will be developed during the next phase of the project.

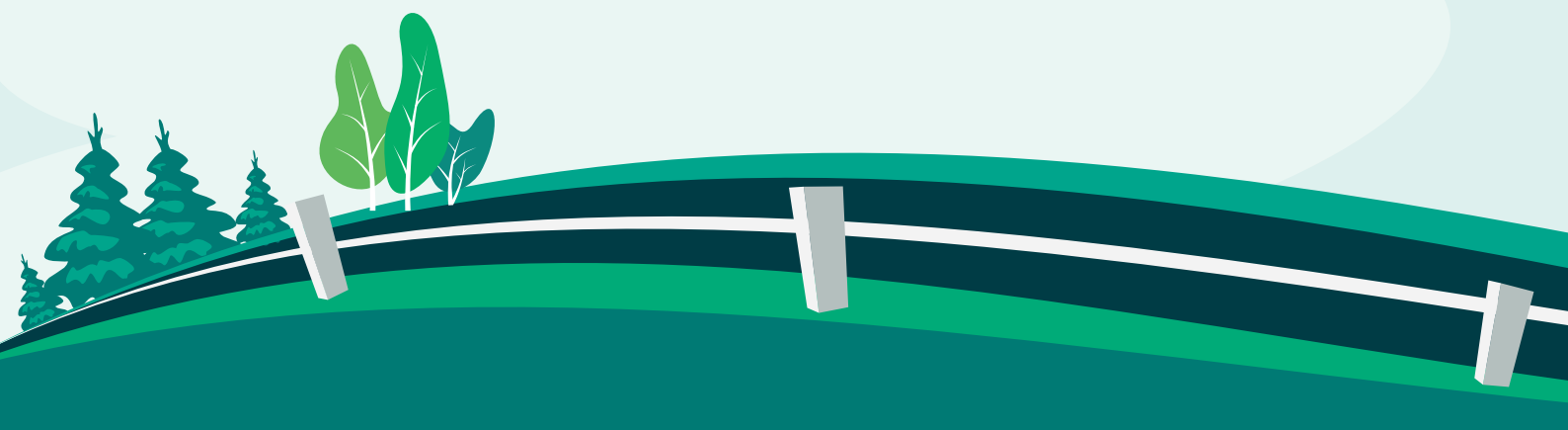
A preliminary design has been developed and is shown within the preferred corridor. This preliminary design is based on currently available information. It is subject to change as further investigations and assessments are completed. The objective of any changes will be to avoid, reduce and mitigate impacts. The Emerging Preferred Transport Corridor is shown on the 'Preferred Corridor' map over leaf

SCHEME DEVELOPMENT STRATEGY

It is proposed to maintain the existing N17 from Knock Village to Ireland West Airport Knock. From Ireland West Airport Knock northwards it is proposed to bypass Charlestown/Bellaghy to the east, Tobercurry to the west, and Ballinacarrow to the north before joining the existing N17 near the Ballymote Junction. The existing N17 will be maintained or improved from

the Ballymote Junction to its termination point at the existing roundabout in Collooney. The project has been progressed in a manner that allows it to be developed in phases. Examples of how the project could be developed as a series of bypasses is shown on the 'Indicative Project Phasing' Map over leaf.

The preferred corridor is shown on the mapping overleaf



PUBLIC DISPLAY

PREFERRED OPTION

From the 31st of January – 21st March 2023, members of the public, or other interested parties will be able to book appointments with members of the project team.

These can be arranged via the project website:
n17knockcollooney.ie/communication-contact-us

Submissions regarding the project can be made to the project team via the following email address: n17knockcollooney@sligococo.ie

Submissions can also be made to the following freepost address:

**Sligo Regional Design Office
Sligo County Council
Unit 1, The Embankment
Castle Street
Freepost FSG7627
Sligo, F91 E4XY**

PUBLIC CONSULTATION DATES

As part of the public consultation for this phase of the project, dates have been scheduled to allow members of the public to meet with the project team. These public consultation dates are:

- **7th, 8th, 14th March**

Slots on each day will be from 1.30pm to 7.30pm with a 30 minute break between 4pm and 4.30pm.

Details on venues will be circulated in due course.

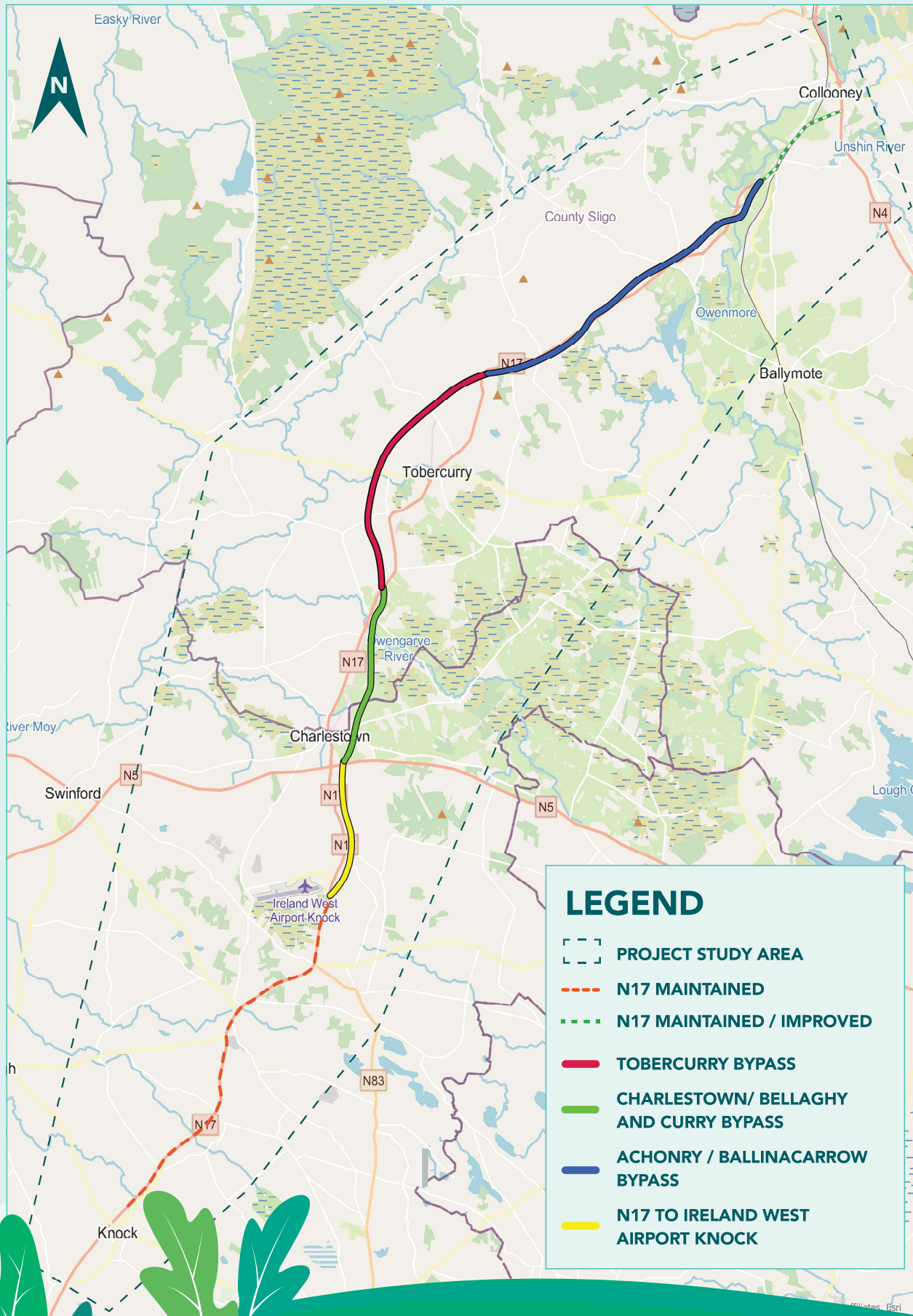
WHAT HAPPENS NEXT?

Once the preferred corridor has been established the project can move into Phase 3: Design and Environmental Evaluation. The detailed design of the road, active travel and public transport infrastructure, the location of junctions and tie-ins, and the design of side roads will be determined at this phase.

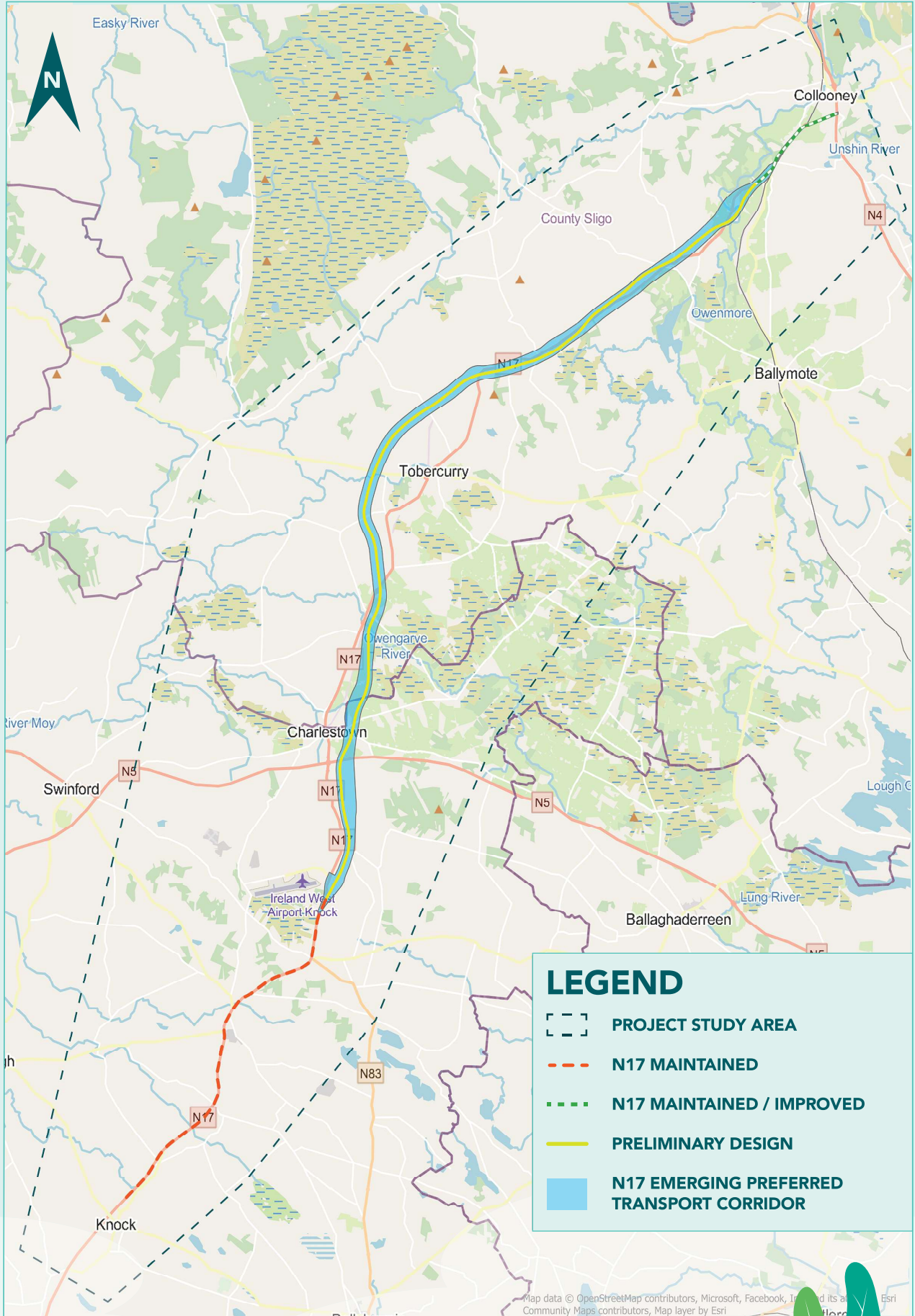
During Phase 3 further engagement with landowners and interested parties within the Emerging Preferred Transport Corridor will be undertaken. These consultations will inform the design process. Progression of the project to Phase 3 is subject to approval of funding.



INDICATIVE PROJECT PHASING



PREFERRED CORRIDOR





KNOCK TO COLLOONEY

N17 KC [AEC] PROJECT TEAM,

Sligo Regional Design Office, Sligo County Council,
Unit 1, The Embankment, Castle Street, Sligo
Freepost FSG7627 | Sligo, F91 E4XY

Email: n17knockcollooney@sligococo.ie | **Phone:** 071 91 11990

www.N17knockcollooney.ie